

Sensitive Language Modelling

To get **the most** out of our language models, we need to carefully consider which words we choose to say. These will depend upon our child's language level, but also what their focus is at the time. Asking yourself these questions can help guide you:

What is my child enjoying about their play?

What are they trying to achieve with their actions?

If my child had the words, what might they want to say right now?

If we can '**match up**' our language models to our child's focus of interest, they are much more likely to listen, remember and learn. This is sensitive language modelling.

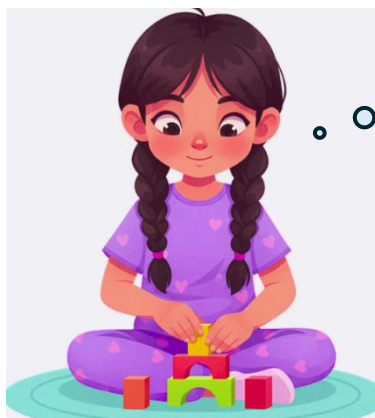
Consider the two examples below. The top example demonstrates the adult asking questions and trying to lead the interaction, the second shows an adult observing her child and commenting sensitively on what he is focused on. In the second example the adult successfully 'maps' her language model to the child's experience, leading to effective language modelling.

"What colour block is that?"

"Let's count them, one, two..."

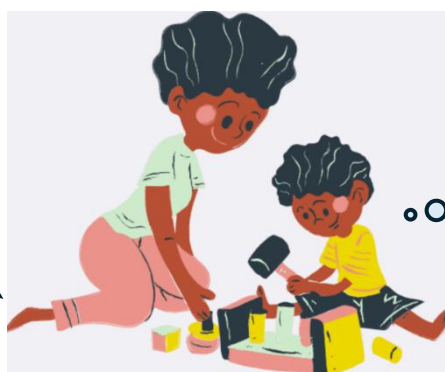
"Shall we knock it down?"

"Are you building a tower?"



Up.. up.. up! Did it!

"Tap, tap, knock it down!"



Tap, tap, tap, gone down!